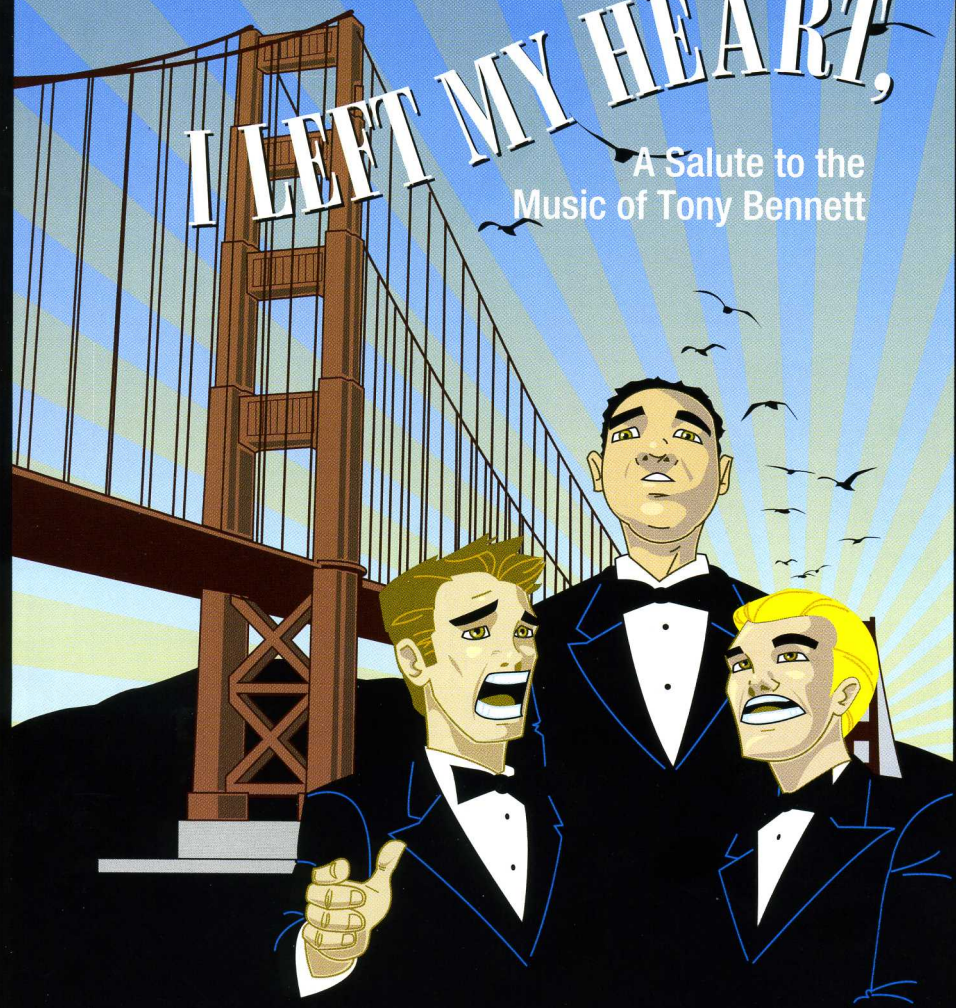


WELK RESORT THEATRE  
PRESENTS

# I LEFT MY HEART,

A Salute to the  
Music of Tony Bennett



MAY 24 - JULY 8, 2007

Welk  
RESORTS  
THEATRE



PRESENTS

# I LEFT MY HEART,

A Salute to the  
Music of Tony Bennett

Conceived by DAVID GRAPES and TODD OLSEN

Book by TODD OLSEN

Original production directed by Todd Olson  
Original piano/vocal arrangements by Vince di Mura

Special Thanks: K. Dawn Grapes

World premiere production presented at  
American Stage – St. Petersburg, FL February 2005

Starring  
Damon Kirsche  
Eric Kunze  
and  
Kevin McMahon

Directed by  
**Nick DeGruccio**

**Executive Produced By**  
Sean Coogan

**Music Director**  
Justin Gray

**Prod. Stage Manager/Lighting Design**  
Jennifer Edwards-Northover

**Set Design**  
Nick Fouch

**Sound Design**  
Patrick Hoyny

**Costume Design**  
Carlotta Malone

To contact the Welk Resort Theatre:  
Please call 1-888-802-7469 or 760-749-3448 or e-mail [box.office@welktheatre.com](mailto:box.office@welktheatre.com).  
Please visit our website at [www.welktheatre.com](http://www.welktheatre.com).

# The Songs in I LEFT MY HEART, A Salute to the Music of Tony Bennett

## Opening Set

- Steppin' Out . . . . . by Irving Berlin  
Top Hat, White Tie and Tails . . . . . by Irving Berlin  
Plenty of Money and You . . . . . by Al Dubin and Harry Warren

## Early Years Set

- Boulevard of Broken Dreams . . . . . by Al Dubin and Harry Warren  
Because of You . . . . . by Arthur Hammerstein and Dudley Wilkinson  
Stranger in Paradise . . . . . by Robert Wright and George Forrest  
The Best is Yet to Come . . . . . by Carolyn Leigh and Cy Coleman

## A Tribute to Friends, Part I

- I Got Rhythm . . . . . by George and Ira Gershwin  
Night and Day . . . . . by Cole Porter  
That Old Black Magic . . . . . by Harold Arlen and John H. Mercer  
Embraceable You . . . . . by George and Ira Gershwin

## A Tribute to Friends, Part II

- I Got it Bad and That Ain't Good . . . . . by Roy Alford and William May  
It's Wonderful . . . . . by Irving Berlin  
Come Rain or Come Shine . . . . . by Harold Arlen and John H. Mercer

## A Tribute to Friends, Part III

- It Don't Mean a Thing . . . . . by Duke Ellington

# The Songs in I LEFT MY HEART, A Salute to the Music of Tony Bennett

## The Film Set

- Love Story (Where Do I Begin?) . . . . . by Carl Sigman and Francis Lai  
The Days of Wine and Roses . . . . . by Henry Mancini and John H. Mercer  
As Time Goes By . . . . . by Herman Hupfield  
The Shadow of Your Smile . . . . . by Paul Francis Webster and John Mandel

## Crazy Rhythm Set

- Crazy Rhythm . . . . . by Joseph Meyer, Roger Wolfe Kahn and Irving Caesar  
Lullaby of Broadway . . . . . by Al Dubin and Harry Warren  
Let's Face the Music and Dance . . . . . by Irving Berlin

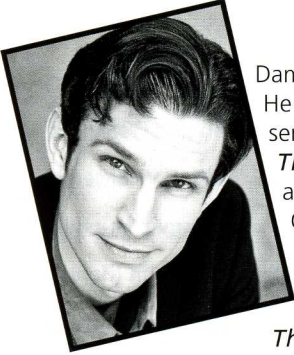
## The Quiet Set

- You Must Believe in Spring . . . . . by Bill Evans  
A Child is Born . . . . . by Bill Evans  
Fly Me to the Moon . . . . . by Bart Howard  
Street of Dreams . . . . . by Samuel Lewis and Victor Young

## The Last Blast

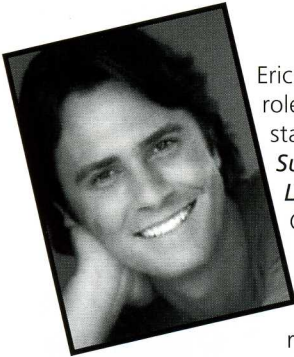
- How Do You Keep the Music Playing? . . . . . by Michel LeGrand and Alan Bergman  
I'm Just a Lucky So & So . . . . . by Duke Ellington  
I Wanna Be Around . . . . . by Sadie Vimmerstedt and John H. Mercer  
The Good Life . . . . . by Jack Reardon and Sascha Distel  
Rags to Riches . . . . . by Richard Adler and Jerry Ross  
  
I Left My Heart in San Francisco . . . . . by Douglass Cross and George Cory  
I'm Just a Lucky So and So . . . . . (Reprise: Exit Music)

## DAMON KIRSCH



Damon returns to the Welk after last fall's Sinatra tribute *My Way*. He has revived numerous golden era musicals with NY's Encores! series, including *Sweet Adeline*, *On A Clear Day...*, *Strike Up The Band*, and *The Ziegfeld Follies Of 1936*. This spring he appeared as Ravenal in *Show Boat* with the Ft. Worth Symphony Orchestra and Franklin Shepard in *Merrily We Roll Along* at TheatreWorks in the Bay area. Regional highlights include *She Loves Me* (Kodaly) and *On The Twentieth Century* (Granit) with L.A.'s Reprise! Series; *Rocky Horror Show* (Brad) and *The Fantasticks* (El Gallo) at Performance Riverside; *My Fair Lady* (Freddy) at La Mirada (Ovation Nomination); and *The Scarlet Pimpernel* (Percy) for Musical Theatre of Wichita. He's appeared as featured soloist at The Kennedy Center, Weill Hall, the 92nd St. Y, Lincoln Center, the Berliner Dom and with the California Philharmonic. He sings regularly with vintage swing orchestra Mora's Modern Rhythmists at venues throughout Southern California including The Chandler Pavilion, The Orpheum, Avalon's Casino Ballroom and aboard HMS Queen Mary and is featured on the orchestra's CDs, "Goblin Market" and "Devil's Serenade." Training: Juilliard. Website: [www.damonkirsche.com](http://www.damonkirsche.com).

## ERIC KUNZE



Eric has had the rare pleasure of starring on Broadway in leading roles for the better part of his professional career. Mr. Kunze recently starred as the title character in the national tour of *Jesus Christ Superstar* (with Carl Anderson). He made his debut as Marius in *Les Miserables* (opposite Lea Salonga) and went on to star as Chris in *Miss Saigon* and then as Joe Hardy in *Damn Yankees* (with Jerry Lewis). Off-Broadway: *Leopards's Leap*, directed by Michael Rupert. International Tours: *The Fantasticks*, *The Pirates of Penzance*, and *The Mikado*. He has received rave reviews for the title role in *Joseph and the Amazing Technicolor Dreamcoat* (MUNY, KC Starlight, Sacramento Music Circus and San Diego CLO earning a San Diego Critics Circle nomination). Other regional (selected): *Evita* (Los Angeles Ovation nomination), *West Side Story*, *Into the Woods*, the title role in *Pippin* (Los Angeles Robbie award), South Pacific and the title role in *The Who's Tommy* (Los Angeles). Eric is thrilled to back where it all began, here in North County. He would like to thank all of his wonderful friends who are here tonight. To Mom, Dad, Sis, Steve, Aaron, Ryan, and Rosie, Eichler, and Joe B., your love and support throughout the years have made it all possible.

