

PLAYBILL®

CIVIC THEATRE
SAN DIEGO, CALIFORNIA

A CHORUS LINE



WWW.PLAYBILL.COM

2008 - 09 Season *San Diego County*
Sponsored by  *Credit Union*

CIVIC THEATRE

August 13 - 17, 2008

John Breglio

presents

A CHORUS LINE

Conceived and Originally Choreographed and Directed by

Michael Bennett

Book by
**James Kirkwood &
Nicholas Dante**

Music by
Marvin Hamlisch

Lyrics by
Edward Kleban

Originally Co-Choreographed by
Bob Avian

with

Clyde Alves Colin Bradbury Venny Carranza John Carroll Emily Fletcher
Stephanie Gibson Michael Gruber Natalie Elise Hall Derek Hanson Hollie Howard
Jay Armstrong Johnson Julie Kotarides Denis Lambert Jessica Latshaw Ian Liberto
Erica Mansfield Stephanie Martignetti Sterling Masters Pilar Millhollen Colt Prattes
Rebecca Riker Alex Ringler Gabrielle Ruiz Clifton Samuels Kevin Santos
Nikki Snelson Brandon Tyler Anthony Wayne J.R. Whittington Jessica Wu

Scenic Design by
Robin Wagner

Costume Design by
Theoni V. Aldredge

Lighting Design by
Tharon Musser

Sound Design by
**Acme Sound
Partners**

Adapted by
Natasha Katz

Music Supervision by
**Patrick
Vaccariello**

Music Direction by
**John
O'Neill**

Orchestrations by
**Jonathan Tunick
Bill Byers
& Hershey Kay**

Vocal Arrangements by
**Don
Pippin**

Choreography Re-Staged by
Baayork Lee

Directed by
Bob Avian

The original production of A CHORUS LINE was produced by The Public Theater, in association with Plum Productions.

CAST



CLYDE
ALVES



JOHN
CARROLL



EMILY
FLETCHER



STEPHANIE
GIBSON



MICHAEL
GRUBER



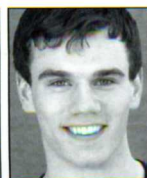
NATALIE ELISE
HALL



DEREK
HANSON



HOLLIE
HOWARD



JAY ARMSTRONG
JOHNSON



DENIS
LAMBERT



JESSICA
LATSHAW



IAN
LIBERTO



PILAR
MILLHOLLEN



COLT
PRATTES



GABRIELLE
RUIZ



KEVIN
SANTOS



NIKKI
SNELSON



ANTHONY
WAYNE



JESSICA
WU



COLIN
BRADBURY



VENNY
CARRANZA



JULIE
KOTARIDES



ERICA
MANSFIELD



STEPHANIE
MARTIGNETTI



STERLING
MASTERS



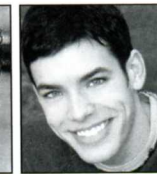
REBECCA
RIKER



ALEX
RINGLER



CLIFTON
SAMUELS



BRANDON
TYLER



J.R.
WHITTINGTON

CAST

Mike	CLYDE ALVES
Roy	VENNY CARRANZA
Larry	JOHN CARROLL
Sheila	EMILY FLETCHER
Judy	STEPHANIE GIBSON
Zach	MICHAEL GRUBER
Val	NATALIE ELISE HALL
Don	DEREK HANSON
Maggie	HOLLIE HOWARD
Mark	JAY ARMSTRONG JOHNSON
Vicki	JULIE KOTARIDES
Greg	DENIS LAMBERT
Kristine	JESSICA LATSHAW
Bobby	IAN LIBERTO
Tricia	STEPHANIE MARTIGNETTI
Lois	STERLING MASTERS
Bebe	PILAR MILLHOLLEN
Al	COLT PRATTES
Diana	GABRIELLE RUIZ
Tom	CLIFTON SAMUELS
Paul	KEVIN SANTOS
Cassie	NIKKI SNELSON
Frank	BRANDON TYLER
Richie	ANTHONY WAYNE
Butch	J.R. WHITTINGTON
Connie	JESSICA WU

SWINGS

COLIN BRADBURY, ERICA MANSFIELD, REBECCA RIKER, ALEX RINGLER

Dance Captain: COLIN BRADBURY

UNDERSTUDIES

Standbys and understudies never substitute for listed players unless a specific announcement for the appearance is made at the time of a performance.

For Al: VENNY CARRANZA, CLIFTON SAMUELS; for Bebe: JULIE KOTARIDES, STERLING MASTERS, REBECCA RIKER; for Bobby: COLIN BRADBURY, ALEX RINGLER; for Cassie: ERICA MANSFIELD, REBECCA RIKER; for Connie: STEPHANIE MARTIGNETTI, STERLING MASTERS; for Diana: JULIE KOTARIDES, REBECCA RIKER; for Don: COLIN BRADBURY, ALEX RINGLER, CLIFTON SAMUELS; for Greg: VENNY CARRANZA, ALEX RINGLER, CLIFTON SAMUELS; for Judy: JULIE KOTARIDES, ERICA MANSFIELD; for Kristine: JULIE KOTARIDES, STEPHANIE MARTIGNETTI, STERLING MASTERS; for Larry: COLIN BRADBURY, BRANDON TYLER, J.R. WHITTINGTON; for Maggie: ERICA MANSFIELD, STEPHANIE MARTIGNETTI; for Mark: BRANDON TYLER, J.R. WHITTINGTON; for Mike: VENNY CARRANZA, BRANDON TYLER; for Paul: BRANDON TYLER, J.R. WHITTINGTON; for Richie: VENNY CARRANZA, J.R. WHITTINGTON; for Sheila: ERICA MANSFIELD, PILAR MILLHOLLEN, REBECCA RIKER; for Val: STEPHANIE MARTIGNETTI, STERLING MASTERS; for Zach: DEREK HANSON, CLIFTON SAMUELS

MUSICAL NUMBERS

I Hope I Get It	Company
I Can Do That	Mike
And.....	Bobby, Richie, Val, Judy
At the Ballet	Sheila, Bebe, Maggie
Sing!	Kristine, Al
Hello Twelve, Hello Thirteen, Hello Love.....	Company
Nothing.....	Diana
Dance: Ten; Looks: Three	Val
The Music and the Mirror.....	Cassie
One	Company
The Tap Combination.....	Company
What I Did for Love	Diana, Company
One: Reprise.....	Company

AN AUDITION

Time: 1975

Place: A Broadway Theatre

**“This show is dedicated to anyone who has ever danced in a chorus
or marched in step...anywhere.” —Michael Bennett**

A CHORUS LINE IS PERFORMED WITHOUT AN INTERMISSION.

A CHORUS LINE ORCHESTRA

Conductor: John C. O'Neill

Associate Conductor/Keyboard 2: Faith Seetoo

Keyboard 1: Daniel Percefull

Percussion: Rick Donato

Music Coordinator: Michael Keller

Synthesizer Programmer: Bruce Samuels

Music Copying: Emily Grishman Music Preparation/Katharine Edmonds, Emily Grishman

Local San Diego Musicians

Alto Sax/Flute/Piccolo/Clarinet/Alto Flute-Paul Sundfor; **Alto Sax/Flute/ Piccolo/Clarinet/**

Bass Clarinet-Jay Mason; **Tenor Sax/Clarinet/Oboe/English Horn**-Robert Ramsey;

Baritone Sax/Clarinet/Eb Contra-bass Clarinet/ Flute/Bassoon-John Reilly;

Principal Trumpet/Flugelhorn – Brad Steinwehe; **Trumpet/Flugelhorn** – Jon Papenbrook;

Trumpet/Flugelhorn-Karl Soukup; **Principal Trombone**-Bob Payne;

Trombone-Richard Gordon; **Bass Trombone**-Jim Prindle; **Percussion**-Pat Pffnner;

Electric/Acoustic Bass-Justin Grinnell; **Keyboard**-Stephen Gray

The musicians employed in this production are members of the
American Federation of Musicians of the United States and Canada.



The use of any recording device, either audio or video, and the taking of photographs, either with or without flash, is strictly prohibited.

WHO'S WHO

Staff for A CHORUS LINE

GENERAL MANAGEMENT

ALAN WASSER ASSOCIATES

Alan Wasser Allan Williams Aaron Lustbader

BOOKING & ENGAGEMENT MANAGEMENT

AWA TOURING SERVICES

Alison Spiriti

Sean Mackey

TOUR PRESS & MARKETING REPRESENTATIVE

TYPE A MARKETING

Anne Rippey Bill Miller

Vance Stringer

NATIONAL PRESS REPRESENTATIVE

Barlow-Hartman

John Barlow Michael Hartman

Wayne Wolfe Melissa Bixler

CASTING

JAY BINDER CASTING

Jay Binder, C.S.A.

Jack Bowdan, C.S.A. Mark Brandon Sara Schatz

Nikole Vallins

PRODUCTION MANAGER

Jake Bell

COMPANY MANAGER

Matthew Sherr

PRODUCTION STAGE MANAGER

Ray Gin

Stage Manager.....Gregory R. Covert
 Assistant Stage Manager.....Anna R. Kaltenbach
 Assistant Company Manager.....Deana Marie Kirsch
 Assistant Director.....Peter Pileski
 Assistant Choreographer.....Michael Gorman
 Assistant Scenic Designer.....David Peterson
 Associate Costume Designer.....Suzy Benzinger
 Associate Costume Designer.....John Glaser
 Assistant Costume Designer.....Patrick Wiley
 Associate Lighting Designer.....Yael Lubetzky
 Assistant Lighting Designer.....Aaron Spivey
 Assistant Sound Designer.....Michael Creason
 Music Coordinator.....Michael Keller
 Synthesizer Programmer.....Bruce Samuels
 Production Carpenter.....Rick Howard
 Head Carpenter.....Brooke Carlson
 Assistant Carpenter.....Dave Vick
 Production Electrician.....James Fedigan
 Head Electrician.....Steve Deidel
 Assistant Electrician.....Steve Ramondo
 Assistant Electrician.....Ann Roche
 Production Sound Engineer.....Scott Sanders
 Head Sound Engineer.....Steve Rogers
 Assistant Sound Engineer.....Joe Foley
 Head Propsman.....Spencer Bell
 Production Wardrobe Supervisor.....Rory Powers
 Wardrobe Supervisor.....Donna L. Peck
 Advertising.....Serino Coyne Inc./Greg Corradetti,
 Kristina Curatolo, Ryan Greer; HMS Media;
 Stevens Advertising Associates;
 Cosmic Design

Website & Online Marketing.....Situation Marketing LLC/
 Damian Bazadona, Ryan Klink, Steve Tate
 Legal Counsel.....Paul Weiss Rifkind Wharton & Garrison,
 LLP/Carolyn Casselman
 Accounting.....Rosenberg, Neuwirth & Kuchner/
 Chris Cacace, Mark D'Ambrosi
 Administrative Assistant to Mr. Greglio.....Helene Gaulrapp
 Associate General Manager.....Aaron Lustbader
 General Management Associate.....Adam Miller
 General Management Office.....Michael Altbau,
 Christopher Betz, Jake Hirzel, Thom Mitchell,
 Patty Montesi, Jennifer Mudge
 Marketing Intern.....Amanda Harper
 Casting Assistants.....Kate Sprance, Karen Young
 Production Photographer.....Paul Kolnik,
 Walter Ios
 Insurance.....Ventura Insurance Brokerage/Janice Brown
 Banking.....Commerce Bank/Barbara von Borstel,
 Olivia Cassin
 Payroll.....Castellana Services, Inc.
 Merchandising.....Max Merchandising/Randi Grossman
 Travel Services.....Road Rebel Entertainment Touring

www.AChorusLine.com

CREDITS AND ACKNOWLEDGMENTS

Scenery built and electrified by Hudson Scenic Studio Inc. Automation equipment provided by Hudson Scenic Studio, Inc. Lighting equipment provided by PRG Lighting. Sound equipment provided by PRG Audio. Finale Costumes by Seamless Costumes, Costumes by Lynn Baccus, Bal Togs Industries, Rick Kelly, D. Barak & Catherine Stribling. Custom Shirts by Cego Custom Shirts. Custom Knitwear by C.C. Wei. Footwear by T.O. Dey, J.C. Theatricals. Rehearsal hats by Arnold S. Levine, Inc. Mike Costa's shirts provided by Lacoste. Finale top hats by Rodney Gordon, Inc. Finale shoes by Capezio. Ricola natural herb cough drops courtesy of Ricola USA, Inc. Emergen-C super energy booster provided by Alacer Corp. Cosmetics provided by MAC Cosmetics.



THE ACTORS AND STAGE MANAGERS EMPLOYED IN THIS PRODUCTION ARE MEMBERS OF ACTORS' EQUITY ASSOCIATION, THE UNION OF PROFESSIONAL ACTORS AND STAGE MANAGERS IN THE UNITED STATES.



Backstage and Front of the House Employees are represented by the international Alliance of Theatrical Stage Employees (or I.A.T.S.E.).



THE MUSICIANS, CONDUCTORS, MUSIC PREPARATION PERSONNEL AND LIBRARIANS EMPLOYED IN THIS PRODUCTION ARE MEMBERS OF THE AMERICAN FEDERATION OF MUSICIANS OF THE UNITED STATES AND CANADA

ssdc

The Director is a member of the Society of Stage Directors and Choreographers, Inc. an independent national labor union.

ATPAM

The Press Agents and Company Managers employed in this production are represented by the Association of Theatrical Press Agents & Managers.